

深圳市万天源光电有限公司
Shenzhen Wanty Photoelectric Co.,Ltd

PRODUCT : TFT TOUCH MODULE

MODULE NO. : T070GBP001-V2

SUPPLIER: Wanty Photoelectric

Co.,LtdDATE: May 15, 2019

SPECIFICATION

Revision: 0.0

T070GBP001-V2

This module uses ROHS material

This specification may change without prior notice in order to improve performance or quality. Please contact Wanty department for updated specification and product status before design for this product or release of this order.

深圳市万天源光电有限公司
Shenzhen Wanty Photoelectric Co.,Ltd

CONTENTS

- 1、 GENERAL INFORMATION**
- 2、 EXTERNAL DIMENSIONS**
- 3、 ABSOLUTE MAXIMUM RATINGS**
- 4、 ELECTRICAL CHARACTERISTICS**
- 5、 CTP CHARACTERISTICS**
- 6、 ELECTRO-OPTICAL CHARACTERISTICS**
- 7、 INTERFACE DESCRIPTION**
- 8、 INPUT TIMING**
- 9、 RELIABILITY TEST CONDITIONS**
- 10、 INSPECTION CRITERION**

深圳市万天源光电有限公司

Shenzhen Wanty Photoelectric Co.,Ltd

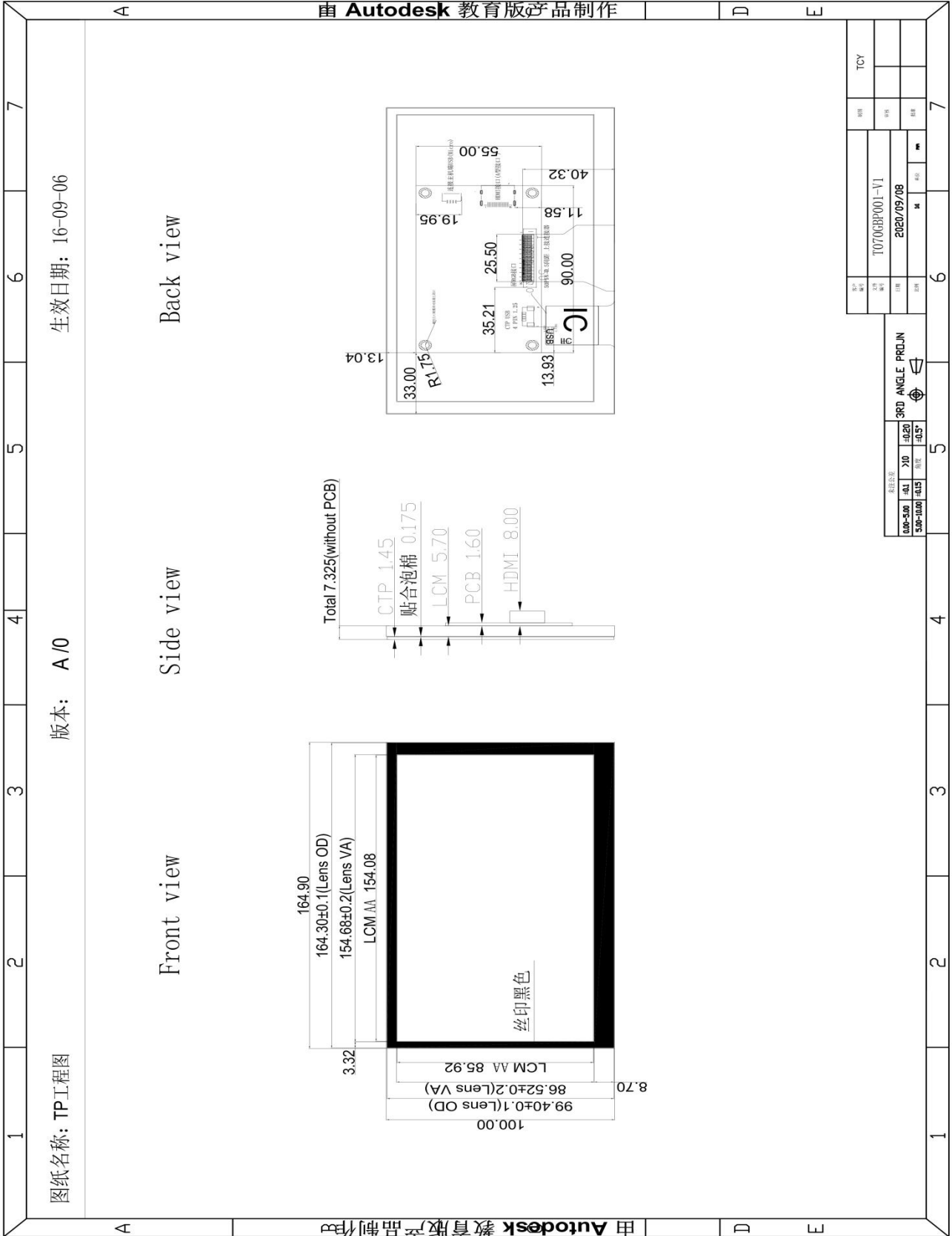
1、GENERAL INFORMATION

Item of general information	Contents		Unit
LCD Display Size(Diagonal)	7		inch
Module Structure	CTP Touch + LCD Display + PCB		-
LCD Display Type	TFT/TRANSMISSIVE		-
LCD Display Mode	Normally White		-
Viewing Direction	All		o'clock
Module size (W×H×T)	164.9×100		mm
Active area (W×H)	154.08×85.92		mm
Number of pixels(Resolution)	800RGB×480		pixel
Pixel pitch (W×H)	0.1926×0.1790		mm
Color Pixel Arrangement	RGB Stripe		-
Module Interface Type	LCD Display	HDMI interface	-
	CTP Touch	USB interface	-
System Support	Win7/Win8/Win10(Plug and play)		-
	Android/Linux (need to be configured first)		-
Power Supply	USB(5.0V)		-
Module Power consumption	MIN450, MAX 750		mA
Color Numbers	16.7M		-
Backlight Type	White LED		-

深圳市万天源光电有限公司

Shenzhen Wanty Photoelectric Co.,Ltd

2、EXTERNAL DIMENSIONS



深圳市万天源光电有限公司

Shenzhen Wanty Photoelectric Co.,Ltd

3、ABSOLUTE MAXIMUM RATINGS

Parameter of absolute maximum ratings	Symbol	Min	Max	Unit
Operating temperature	Top	-10	60	°C
Storage temperature	Tst	-20	70	°C
Humidity	RH	-	90%(Max 60°C)	RH

Note: Absolute maximum ratings means the product can withstand short-term, not more than 120 hours. If the product is a long time to withstand these conditions, the life time would be shorter.

4、ELECTRICAL CHARACTERISTICS(DC CHARACTERISTICS)

Parameter of DC characteristics	Symbol	Min.	Typ.	Max.	Unit
PCB operating voltage	VUSB	-	5.0	-	V
LCD I/O operating voltage	VDD	3.0	3.3	3.6	V
Input voltage 'H' level	VIH	0.7*VDD	-	VDD	V
Input voltage 'L' level	VIL	VSS	-	0.3*VDD	V
Output voltage 'H' level	VOH	VDD-0.4	-	VDD	V
Output voltage 'L' level	VOL	VSS	-	VSS+0.4	V

深圳市万天源光电有限公司
Shenzhen Wanty Photoelectric Co.,Ltd

5、CTP CHARACTERISTICS

Item of CTP characteristics	Specification	Unit	Remark
Panel Type	Glass Cover + Glass Sensor	-	-
Resolution	800×480	pixel	-
Surface Hardness	≥6H	-	-
Transparency	>82%	-	-
Driver IC	-	-	-
Interface Type	USB	-	-
Support Points	5	-	-
Sampling Rate	20~100	Hz	-
Supply voltage	3.3	V	-

深圳市万天源光电有限公司

Shenzhen Wanty Photoelectric Co.,Ltd

6、ELECTRO-OPTICAL CHARACTERISTICS

Item of electro-optical characteristics		Symbol	Condition	Min.	Typ.	Max.	Unit	Remark	Note
Response time		Tr+Tf	$\theta=0$ $\varnothing=0$ Ta=25℃	-	25	40	ms	FIG 1.	4
Contrast Ratio		CR		-	320	-	-	FIG 2.	1
Luminance uniformity		δ WHITE		-	80	-	%	FIG 2.	3
Surface Luminance		Lv		400	450	-	cd/m2	FIG 2.	2
CIE (x, y) chromaticity	White	White x	$\theta=0$ $\varnothing=0$ Ta=25℃	-	0.302	-	-	FIG 2.	5
		White y		-	0.338	-			
	Red	Red x		-	0.606	-			
		Red y		-	0.325	-			
	Green	Green x		-	0.303	-			
		Green y		-	0.567	-			
	Blue	Blue x		-	0.147	-			
		Blue y		-	0.161	-			
Viewing angle range	$\varnothing=90$ (12 o'clock)		CR \geq 10	-	50	-	deg	FIG 3.	6
	$\varnothing=270$ (6 o'clock)			-	70	-	deg		
	$\varnothing=0$ (3 o'clock)			-	70	-	deg		
	$\varnothing=180$ (9 o'clock)			-	70	-	deg		
NTSC ratio		-	-	-	50	-	%	-	-

Note 1. Contrast Ratio(CR) is defined mathematically by the following formula. For more information see FIG 2.:

$$\text{Contrast Ratio(CR)} = \frac{\text{Average Surface Luminance with all white pixels(P1,P2, P3, P4, P5, P6,P7, P8, P9)}}{\text{Average Surface Luminance with all black pixels(P1,P2, P3, P4, P5, P6,P7, P8, P9)}}$$

Note 2. Surface luminance is the LCD surface from the surface with all pixels displaying white. For more information see FIG 2.

$$L_v = \text{Average Surface Luminance with all white pixels (P1,P2,P 3,P4, P5,P6,P7,P8,P9)}$$

Note 3. The uniformity in surface luminance (δ WHITE) is determined by measuring

深圳市万天源光电有限公司

Shenzhen Wanty Photoelectric Co.,Ltd

luminance at each test position 1 through 9, and then dividing the maximum luminance of 9 points luminance by minimum luminance of 9 points luminance. For more information see FIG 2.

$$\delta_{\text{WHITE}} = \frac{\text{Minimum Surface Luminance with all white pixels (P1, P2, P3, P4, P5, P6, P7, P8, P9)}}{\text{Maximum Surface Luminance with all white pixels (P1, P2, P3, P4, P5, P6, P7, P8, P9)}}$$

Note 4. Response time is the time required for the display to transition from White to black(Rise Time, Tr) and from black to white(Decay Time, Tf). For additional information see FIG 1.

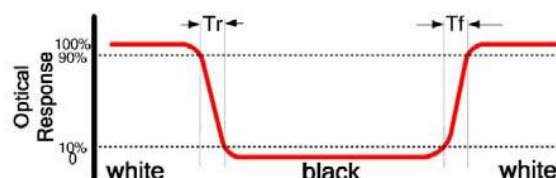
Note 5. CIE (x, y) chromaticity ,The x,y value is determined by screen active area position 5. For more information see FIG 2.

Note 6. Viewing angle is the angle at which the contrast ratio is greater than a specific value. For TFT module, the specific value of contrast ratio is 10.The angles are determined for the horizontal or x axis and the vertical or y axis with respect to the z axis which is normal to the LCD surface. For more information see FIG 3.

Note 7. For Viewing angle and response time testing, the testing data is base on Autronic-Melchers's ConoScope. Series Instruments. For contrast ratio, Surface Luminance, Luminance uniformity and CIE, the testing data is base on BM-7 photo detector.

Note 8. For TN type TFT transmissive module, Gray scale reverse occurs in the direction of panel viewing angle.

FIG.1. The definition of Response Time



深圳市万天源光电有限公司

Shenzhen Wanty Photoelectric Co.,Ltd

FIG.2. Measuring method for Contrast ratio, surface luminance, Luminance uniformity, CIE (x , y) chromaticity

A : $H/6$;

B : $V/6$;

H,V : Active Area(AA) size

Measurement instrument: BM-7; Light spot size=5mm, 350mm distance from the LCD surface to detector lens.

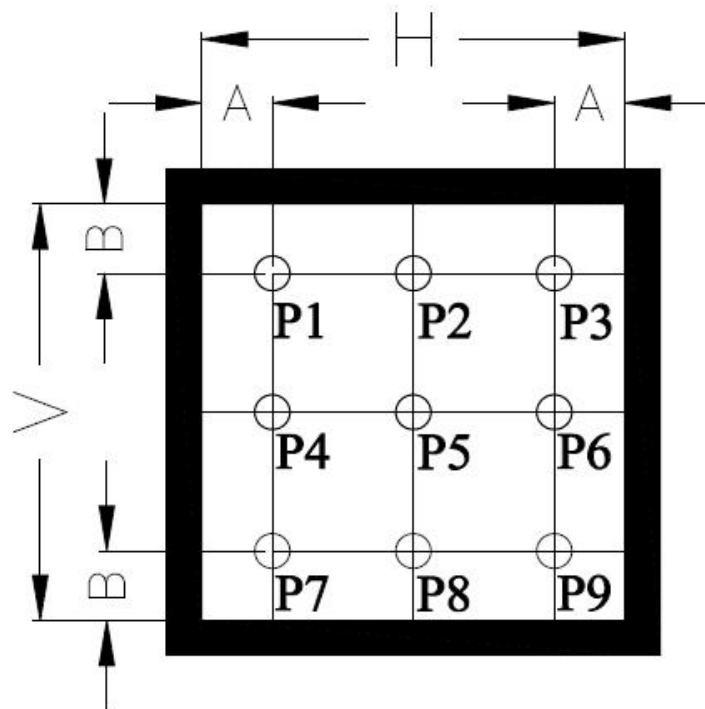
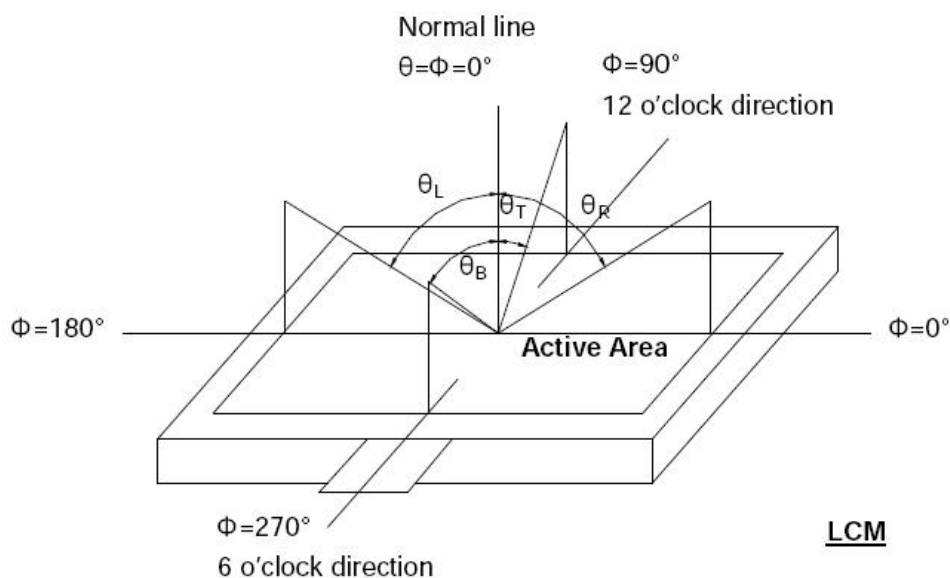


FIG.3. The definition of viewing angle



深圳市万天源光电有限公司

Shenzhen Wanty Photoelectric Co.,Ltd

7、INTERFACE DESCRIPTION

A、HDMI Interface Description

NO.	Symbol	DESCRIPTION
1	TMDS Data2+	Positive side of channel 2 TMDS low-voltage signal differential input pair
2	TMDS Data2 Shield	Ground
3	TMDS Data2-	Negative side of channel 2 TMDS low-voltage signal differential input pair
4	TMDS Data1+	Positive side of channel 1 TMDS low-voltage signal differential input pair
5	TMDS Data1 Shield	Ground
6	TMDS Data1-	Negative side of channel 1 TMDS low-voltage signal differential input pair
7	TMDS Data0+	Positive side of channel 0 TMDS low-voltage signal differential input pair
8	TMDS Data0 Shield	Ground
9	TMDS Data0-	Negative side of channel 0 TMDS low-voltage signal differential input pair
10	TMDS Clock+	Positive side of reference clock. TMDS low-voltage signal differential input pair
11	TMDS Clock Shield	Ground
12	TMDS Clock-	Negative side of reference clock. TMDS low-voltage signal differential input pair
13	CEC	No Connection
14	Reserved(N.C.)	No Connection
15	SCL	DDC SCL
16	SDA	DDC SDA
17	DDC/CEC Ground	Ground
18	+5V Power	+5V Power
19	Hot Plug Detect	Hot Plug Detect

B、USB Interface Description

Symbol	DESCRIPTION
VUSB	USB Power
D-	USB Data-
D+	USB Data+
NC	No connection
GND	Power Ground

深圳市万天源光电有限公司

Shenzhen Wanty Photoelectric Co.,Ltd

Application Note: Please connect the USB first, and then connect the HDMI interface.

8、LCD TIMING

Horizontal input Timing table

Parameter	Symbol	Value			Unit
		Min.	Typ.	Max.	
DCLK frequency@ Frame rate=60Hz	DCLK	44.9	51.2	63	MHz
Horizontal display area	thd	1024			DCLK
1 Horizontal Line	th	1200	1344	1400	DCLK
HSYNC pulse width	thpw	1	-	140	DCLK
HSYNC Blanking	thb	160	160	160	DCLK
HSYNC Front Porch	thfp	16	160	216	DCLK
Vertical display area	tvd	600			H
VSYNC period time	tv	624	635	750	H
VSYNC pulse width	tvpw	1	-	20	H
VSYNC Blanking	tvb	23	23	23	H
VSYNC Front Porch	tvfp	1	12	127	H

Vertical input Timing table

Parameter	Symbol	Value			Unit
		Min.	Typ.	Max.	
DCLK frequency@ Frame rate=60Hz	DCLK	40.8	51.2	67.2	MHz
Horizontal display area	thd	1024			DCLK
HSYNC period time	th	1114	1344	1400	DCLK
HSYNC Blanking	thb + thfp	90	320	376	DCLK
Vertical display area	tvd	600			H
VSYNC period time	tv	610	635	800	H
VSYNC Blanking	tvb + tvfp	10	35	200	H

深圳市万天源光电有限公司

Shenzhen Wanty Photoelectric Co.,Ltd

9、RELIABILITY TEST CONDITIONS

No.	Test Item	Test Condition
1	High Temperature Storage	70℃/120 hours
2	Low Temperature Storage	-20℃/120 hours
3	High Temperature Operating	60℃/120 hours
4	Low Temperature Operating	-10℃/120 hours
5	Temperature Cycle Storage	-10℃(30min.)~25(5min.)~60℃(30min.)×10cycles

A、 Inspection after test:

Inspection after 2~4 hours storage at room temperature, the sample shall be free from defects:

- Air bubble in the LCD;
- Sealleak;
- Non-display;
- Missing segments;
- Glass crack;
- Current is twice higher than initial value.

B、 Remark:

- The test samples should be applied to only one test item.
- Sample size for each test item is 5~10pcs.
- Failure Judgment Criterion: Basic Specification, Electrical Characteristic, Mechanical Characteristic, Optical Characteristic.

深圳市万天源光电有限公司

Shenzhen Wanty Photoelectric Co.,Ltd

10、 INSPECTION CRITERION

This specification is made to be used as the standard of acceptance/rejection criteria for TFT-LCD/IPS TFT-LCD module product, and this specification is applicable only in the case that the size of module equal to or exceed than 3.5 inch.

10.1 Sample plan

Sampling plan according to GB/T2828.1-2003/ISO 2859-1: 1999 and ANSI/ASQC Z1.4-1993,normal level 2 and based on:

Major defect: AQL 0.65

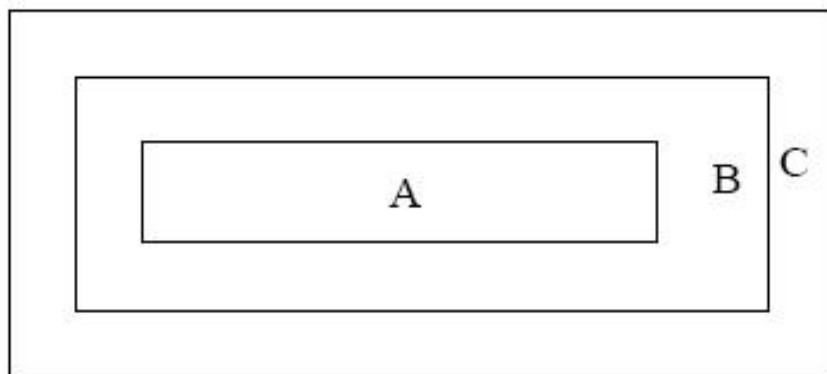
Minor defect: AQL 1.5

10.2 Inspection condition

Viewing distance for cosmetic inspection is about 30cm with bare eyes, and under an environment of 20~40W light intensity, all directions for inspecting the sample should be within 45° against perpendicular line. (Normal temperature 20~25°C and normal humidity 60 ±15%RH)

10.3 Definition of Inspection Item.

A、 Definition of inspection zone in LCD.



深圳市万天源光电有限公司

Shenzhen Wanty Photoelectric Co.,Ltd

Zone A: character/Digit area

Zone B: viewing area except Zone A (Zone A + Zone B=minimum Viewing area)

Zone C: Outside viewing area (invisible area after assembly in customer's product)

Fig.1 Inspection zones in an LCD

Note: As a general rule, visual defects in Zone C are permissible, when it is no trouble for quality and assembly of customer's product.

B 、 Definition of some visual defect

Bright dot	Because of losing all or part function, bad pixel dots appear bright and the size is more than 50% of one dot in which LCD panel is displaying under black pattern.
Dark dot	Dots appear dark and unchanged in size in which LCD panel is displaying under pure red, green, blue picture, or pure whiter picture.

10.4 Major Defect

Item No.	Items to be inspected	Inspection standard	Classification of defects
1	Functional defects	1) No display 2) Display abnormally 3) Missing vertical, horizontal segment 4) Short circuit 5) Excess power consumption 6)Backlight no lighting, flickering and abnormal lighting	major
2	Missing	Missing component	
3	Outline dimension	Overall outline dimension beyond the drawing is not allowed	

深圳市万天源光电有限公司

Shenzhen Wanty Photoelectric Co.,Ltd

10.5 Minor Defect

Item No.	Items to be inspected	Inspection standard	Classification of defects																																	
1	Bright dot /dark dot defect	<table border="1" style="width: 100%; border-collapse: collapse;"> <thead> <tr> <th rowspan="3" style="width: 20%;">Zone</th> <th colspan="4">Acceptable Qty</th> </tr> <tr> <th colspan="3">A+B</th> <th rowspan="2" style="width: 5%;">C</th> </tr> <tr> <th style="width: 15%;">3.5"~7"</th> <th style="width: 15%;">7~10.1"</th> <th style="width: 15%;">>10.1"</th> </tr> </thead> <tbody> <tr> <td>Bright pixel dot</td> <td style="text-align: center;">1</td> <td style="text-align: center;">2</td> <td style="text-align: center;">3</td> <td rowspan="5" style="text-align: center; vertical-align: middle;">Acceptable</td> </tr> <tr> <td>Dark pixel dot</td> <td style="text-align: center;">4</td> <td style="text-align: center;">4</td> <td style="text-align: center;">4</td> </tr> <tr> <td>2bright dots adjacent</td> <td style="text-align: center;">0</td> <td style="text-align: center;">0</td> <td style="text-align: center;">0</td> </tr> <tr> <td>2dark dots adjacent</td> <td style="text-align: center;">0</td> <td style="text-align: center;">0</td> <td style="text-align: center;">0</td> </tr> <tr> <td>Total bright and dark dots</td> <td style="text-align: center;">5</td> <td style="text-align: center;">6</td> <td style="text-align: center;">7</td> </tr> </tbody> </table> <p>Note: Minimum distance between defective dots is more than 5mm; Pixel dots' function is normal, but bright dots caused by foreign material and other reasons are judged by the dot defect of 5.2.</p>	Zone	Acceptable Qty				A+B			C	3.5"~7"	7~10.1"	>10.1"	Bright pixel dot	1	2	3	Acceptable	Dark pixel dot	4	4	4	2bright dots adjacent	0	0	0	2dark dots adjacent	0	0	0	Total bright and dark dots	5	6	7	Minor
Zone	Acceptable Qty																																			
	A+B			C																																
	3.5"~7"	7~10.1"	>10.1"																																	
Bright pixel dot	1	2	3	Acceptable																																
Dark pixel dot	4	4	4																																	
2bright dots adjacent	0	0	0																																	
2dark dots adjacent	0	0	0																																	
Total bright and dark dots	5	6	7																																	
2		<table border="1" style="width: 100%; border-collapse: collapse;"> <thead> <tr> <th rowspan="3" style="width: 20%;">Zone</th> <th colspan="4">Acceptable Qty</th> </tr> <tr> <th colspan="3">A+B</th> <th rowspan="2" style="width: 5%;">C</th> </tr> <tr> <th style="width: 15%;">3.5"~7"</th> <th style="width: 15%;">7~10.1"</th> <th style="width: 15%;">>10.1"</th> </tr> </thead> <tbody> <tr> <td>Size(mm)</td> <td style="text-align: center;">3.5"~7"</td> <td style="text-align: center;">7~10.1"</td> <td style="text-align: center;">>10.1"</td> <td rowspan="4" style="text-align: center; vertical-align: middle;">Acceptable</td> </tr> <tr> <td>$\Phi \leq 0.2$</td> <td style="text-align: center;">Acceptable</td> <td style="text-align: center;">Acceptable</td> <td style="text-align: center;">Acceptable</td> </tr> <tr> <td>$0.2 < \Phi \leq 0.5$</td> <td style="text-align: center;">4</td> <td style="text-align: center;">5</td> <td style="text-align: center;">6</td> </tr> <tr> <td>$\Phi > 0.5$</td> <td style="text-align: center;">0</td> <td style="text-align: center;">0</td> <td style="text-align: center;">0</td> </tr> </tbody> </table> <p>Note: 1. Minimum distance between defective dots is more than 5 mm; 2. The quantity of defect is zero in operating condition.</p>	Zone	Acceptable Qty				A+B			C	3.5"~7"	7~10.1"	>10.1"	Size(mm)	3.5"~7"	7~10.1"	>10.1"	Acceptable	$\Phi \leq 0.2$	Acceptable	Acceptable	Acceptable	$0.2 < \Phi \leq 0.5$	4	5	6	$\Phi > 0.5$	0	0	0	Minor				
Zone	Acceptable Qty																																			
	A+B			C																																
	3.5"~7"	7~10.1"	>10.1"																																	
Size(mm)	3.5"~7"	7~10.1"	>10.1"	Acceptable																																
$\Phi \leq 0.2$	Acceptable	Acceptable	Acceptable																																	
$0.2 < \Phi \leq 0.5$	4	5	6																																	
$\Phi > 0.5$	0	0	0																																	
3	Linear defect	<table border="1" style="width: 100%; border-collapse: collapse;"> <thead> <tr> <th colspan="2" rowspan="2" style="width: 20%;">Zone</th> <th colspan="3">Acceptable Qty</th> <th rowspan="2" style="width: 5%;">C</th> </tr> <tr> <th colspan="3">A+B</th> </tr> <tr> <th style="width: 10%;">Length</th> <th style="width: 10%;">Width</th> <th style="width: 15%;">3.5"~7"</th> <th style="width: 15%;">7~10.1"</th> <th style="width: 15%;">>10.1"</th> </tr> </thead> <tbody> <tr> <td>Ignore</td> <td>$W \leq 0.05$</td> <td style="text-align: center;">Acceptable</td> <td style="text-align: center;">Acceptable</td> <td style="text-align: center;">Acceptable</td> <td rowspan="3" style="text-align: center; vertical-align: middle;">Acceptable</td> </tr> <tr> <td>$L \leq 5.0$</td> <td>$0.05 < W \leq 0.1$</td> <td style="text-align: center;">4</td> <td style="text-align: center;">5</td> <td style="text-align: center;">6</td> </tr> <tr> <td>$L > 5.0$</td> <td>$W > 0.1$</td> <td style="text-align: center;">0</td> <td style="text-align: center;">0</td> <td style="text-align: center;">0</td> </tr> </tbody> </table>	Zone		Acceptable Qty			C	A+B			Length	Width	3.5"~7"	7~10.1"	>10.1"	Ignore	$W \leq 0.05$	Acceptable	Acceptable	Acceptable	Acceptable	$L \leq 5.0$	$0.05 < W \leq 0.1$	4	5	6	$L > 5.0$	$W > 0.1$	0	0	0	Minor			
Zone		Acceptable Qty			C																															
		A+B																																		
Length	Width	3.5"~7"	7~10.1"	>10.1"																																
Ignore	$W \leq 0.05$	Acceptable	Acceptable	Acceptable	Acceptable																															
$L \leq 5.0$	$0.05 < W \leq 0.1$	4	5	6																																
$L > 5.0$	$W > 0.1$	0	0	0																																

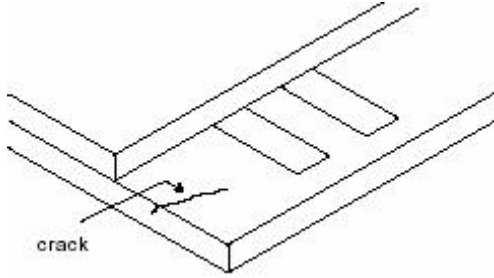
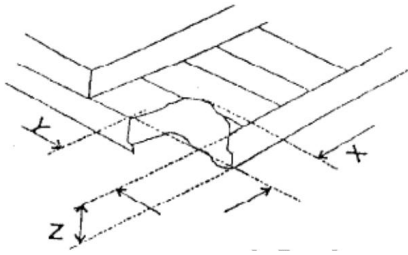
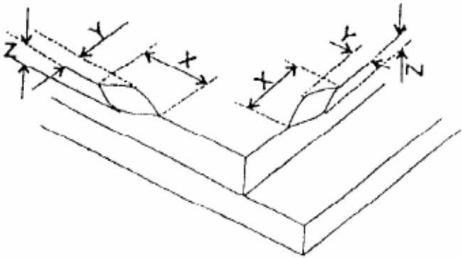
深圳市万天源光电有限公司

Shenzhen Wanty Photoelectric Co.,Ltd

4	Polarizer defect	<p>5.4.1 Polarizer Position</p> <p>(i) Shifting in position should not exceed the glass outline dimension.</p> <p>(ii) Incomplete covering of the viewing area due to shifting is not allowed.</p> <p>5.4.2 Dirt on polarizer</p> <p>Dirt which can be wiped easily should be acceptable.</p> <p>5.4.3 Polarizer Dent & Air bubble</p> <table border="1" style="width: 100%; border-collapse: collapse; margin-bottom: 10px;"> <thead> <tr> <th colspan="2" rowspan="2">Zone</th> <th colspan="3">Acceptable Qty</th> <th rowspan="2">C</th> </tr> <tr> <th colspan="3">A+B</th> </tr> <tr> <th rowspan="2">Size(mm)</th> <th colspan="2"></th> <th>3.5"~7"</th> <th>7~10.1"</th> <th>>10.1"</th> <th rowspan="2">Acceptable</th> </tr> </thead> <tbody> <tr> <td>$\Phi \leq 0.2$</td> <td colspan="2">Acceptable</td> <td>Acceptable</td> <td>Acceptable</td> <td>Acceptable</td> </tr> <tr> <td>$0.2 < \Phi \leq 0.5$</td> <td colspan="2">4</td> <td>5</td> <td>6</td> <td></td> </tr> <tr> <td>$\Phi > 0.5$</td> <td colspan="2">0</td> <td>0</td> <td>0</td> <td></td> </tr> </tbody> </table> <p>5.4.4 Polarizer scratch</p> <p>(i) If the polarizer scratch can be seen after cover assembling or in the operating condition, judge by the linear defect of 5.3.</p> <p>(ii) If the polarizer scratch can be seen only in non-operating condition or some special angle, judge by the following:</p> <table border="1" style="width: 100%; border-collapse: collapse;"> <thead> <tr> <th colspan="2" rowspan="2">Zone</th> <th colspan="3">Acceptable Qty</th> <th rowspan="2">C</th> </tr> <tr> <th colspan="3">A+B</th> </tr> <tr> <th rowspan="2">Length</th> <th rowspan="2">Width</th> <th colspan="2"></th> <th>3.5"~7"</th> <th>7~10.1"</th> <th>>10.1"</th> <th rowspan="2">Acceptable</th> </tr> </thead> <tbody> <tr> <td>Ignore</td> <td>$W \leq 0.05$</td> <td>Acceptable</td> <td>Acceptable</td> <td>Acceptable</td> <td>Acceptable</td> </tr> <tr> <td>$1.0 < L \leq 5.0$</td> <td>$0.05 < W \leq 0.20$</td> <td>4</td> <td>5</td> <td>6</td> <td></td> </tr> <tr> <td>$L > 5.0$</td> <td>$W > 0.2$</td> <td>0</td> <td>0</td> <td>0</td> <td></td> </tr> </tbody> </table>	Zone		Acceptable Qty			C	A+B			Size(mm)			3.5"~7"	7~10.1"	>10.1"	Acceptable	$\Phi \leq 0.2$	Acceptable		Acceptable	Acceptable	Acceptable	$0.2 < \Phi \leq 0.5$	4		5	6		$\Phi > 0.5$	0		0	0		Zone		Acceptable Qty			C	A+B			Length	Width			3.5"~7"	7~10.1"	>10.1"	Acceptable	Ignore	$W \leq 0.05$	Acceptable	Acceptable	Acceptable	Acceptable	$1.0 < L \leq 5.0$	$0.05 < W \leq 0.20$	4	5	6		$L > 5.0$	$W > 0.2$	0	0	0		Minor
Zone		Acceptable Qty			C																																																																			
		A+B																																																																						
Size(mm)			3.5"~7"	7~10.1"	>10.1"	Acceptable																																																																		
	$\Phi \leq 0.2$	Acceptable		Acceptable	Acceptable		Acceptable																																																																	
$0.2 < \Phi \leq 0.5$	4		5	6																																																																				
$\Phi > 0.5$	0		0	0																																																																				
Zone		Acceptable Qty			C																																																																			
		A+B																																																																						
Length	Width			3.5"~7"	7~10.1"	>10.1"	Acceptable																																																																	
		Ignore	$W \leq 0.05$	Acceptable	Acceptable	Acceptable		Acceptable																																																																
$1.0 < L \leq 5.0$	$0.05 < W \leq 0.20$	4	5	6																																																																				
$L > 5.0$	$W > 0.2$	0	0	0																																																																				
5	MURA	Using 3% ND filter, it's NG if it can be seen in R,G,B picture.	Minor																																																																					
	White/Black dot (MURA)	Visible under: ND3%; $D \leq 0.15\text{mm}$, Acceptable; $0.15\text{mm} < D \leq 0.5\text{mm}$, $N \leq 4$; $D > 0.5\text{mm}$, Not allowable.																																																																						

深圳市万天源光电有限公司

Shenzhen Wanty Photoelectric Co.,Ltd

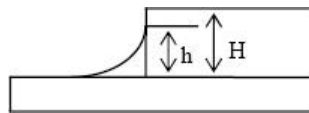
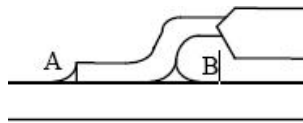
6	Glass defect	<p>(i) Crack Cracks are not allowed.</p> 	Minor								
		<p>(ii) TFT chips on corner</p>  <table border="1" style="margin: 10px auto; border-collapse: collapse;"> <thead> <tr> <th style="padding: 5px;">X</th> <th style="padding: 5px;">Y</th> <th style="padding: 5px;">Z</th> <th style="padding: 5px;">Acceptable</th> </tr> </thead> <tbody> <tr> <td style="text-align: center; padding: 5px;">≤ 3.0</td> <td style="text-align: center; padding: 5px;">≤ 3.0</td> <td style="text-align: center; padding: 5px;">Not more than the thickness of glass</td> <td style="text-align: center; padding: 5px;">$N \leq 3$</td> </tr> </tbody> </table> <p style="font-size: small;">Chips on the corner of terminal shall not be allowed to extend into the ITO pad or expose perimeter seal.</p>	X	Y	Z	Acceptable	≤ 3.0	≤ 3.0	Not more than the thickness of glass	$N \leq 3$	Minor
		X	Y	Z	Acceptable						
≤ 3.0	≤ 3.0	Not more than the thickness of glass	$N \leq 3$								
<p>(iii) Usual surface crack</p>  <table border="1" style="margin: 10px auto; border-collapse: collapse;"> <thead> <tr> <th style="padding: 5px;">X</th> <th style="padding: 5px;">Y</th> <th style="padding: 5px;">Z</th> <th style="padding: 5px;">Acceptable</th> </tr> </thead> <tbody> <tr> <td style="text-align: center; padding: 5px;">≤ 1.5</td> <td style="text-align: center; padding: 5px;">≤ 1.5</td> <td style="text-align: center; padding: 5px;">Not more than the thickness of glass</td> <td style="text-align: center; padding: 5px;">$N \leq 4$</td> </tr> </tbody> </table> <p style="font-size: small; text-align: center;">It is only applicable to the upper glass of LCD.</p>	X	Y	Z	Acceptable	≤ 1.5	≤ 1.5	Not more than the thickness of glass	$N \leq 4$	Minor		
X	Y	Z	Acceptable								
≤ 1.5	≤ 1.5	Not more than the thickness of glass	$N \leq 4$								

深圳市万天源光电有限公司

Shenzhen Wanty Photoelectric Co.,Ltd

10.6 Module Cosmetic Criteria

Item No.	Items to be inspected	Inspection Standard	Classification of defects
1	Difference in Spec.	Not allowable	Major
2	Pattern peeling	No substrate pattern peeling and floating	Major
3	Soldering defects	No soldering missing	Major
		No soldering bridge	Major
		No cold soldering	Minor
4	Resist flaw on PCB	Visible copper foil ($\Phi 0.5$ mm or more) on substrate pattern is not allowed	Minor
5	FPC gold finger	No dirt, breaking, oxidation lead to black	Major
6	Backlight plastic frame	No deformation, crack, breaking, backlight positioning column breaking, obvious nick.	Minor
7	Marking printing effect	No dark marking, incomplete, deformation lead to unable to judge	Minor
8	Accretion of metallic Foreign matter	No accretion of metallic foreign matter (Not exceed $\Phi 0.2$ mm)	Minor
9	Stain	No stain to spoil cosmetic badly	Minor
10	Plate discoloring	No plate fading, rusting and discoloring	Minor
11	1. Lead parts	a. Soldering side of PCB Solder to form a 'Filet' all around the lead. Solder should not hide the lead form perfectly.	Minor
		b. Components side(In case of 'Through Hole PCB') Solder to reach the Components side of PCB.	Minor
	2. Flat packages	Either 'Toe'(A) or 'Seal'(B)of the lead to be covered by "Filet". Lead form to be assume over Solder.	Minor
	3. Chips	$(3/2) H \geq h \geq (1/2) H$	Minor
4. Solder ball/Solder splash	a. The spacing between solder ball and the conductor or solder pad $h \geq 0.13$ mm. The diameter of solder ball $d \leq 0.15$ mm.	Minor	
	b. The quantity of solder balls or solder splashes isn't beyond 5 in 600 mm ² .	Minor	
	c. Solder balls/Solder splashes do not violate minimum electrical clearance.	Major	



深圳市万天源光电有限公司
Shenzhen Wanty Photoelectric Co.,Ltd
